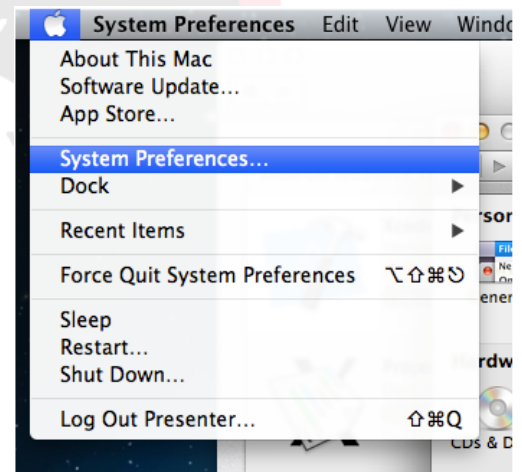


Install A Printer in Mac OS

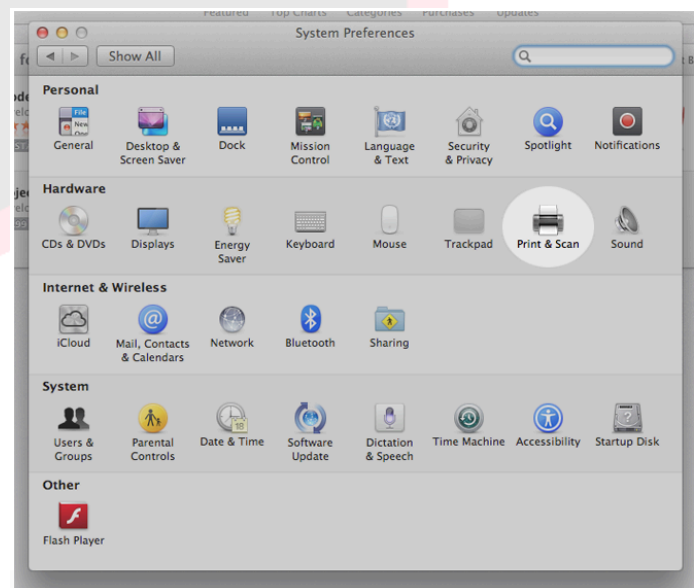
****Please follow these instructions to install a printer on the GMSD student machines. Using the software and following the instructions that came with the printer will NOT work.**

1. Make sure the printer is accessible by the laptop by:
 - a. If it is a wireless printer, make sure both the printer and the laptop are connected to the same network.
 - b. If it is not a wireless printer, make sure the USB cable coming from the printer is plugged into the laptop.

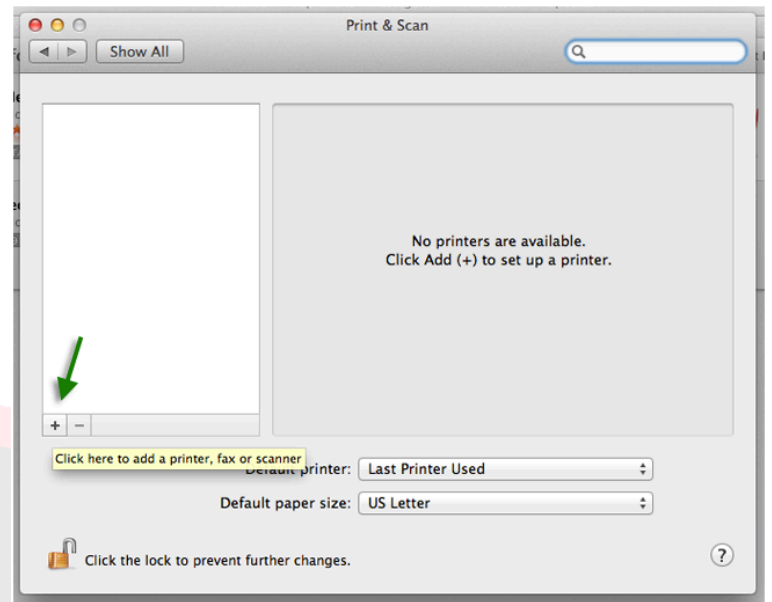
2. **Select System Preferences** from the Apple Menu.



3. **Click on the Printers and Scanners icon.**

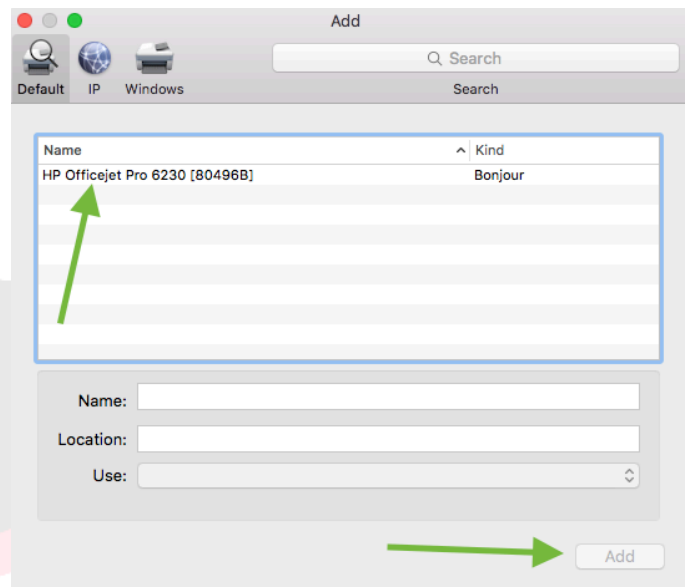


4. From the **Printers and Scanners** window, *click* on the plus sign.



5. The printer should be visible. Just *select* the printer, *name* it, and *click add*. Once the printer is selected, the driver should appear.

**Drivers have been added for all the following manufacturers: Brother, Cannon, Epson, HP, Lexmark, and Xerox



6. If you need a driver added please email the printer manufacturer, the printer model, and the laptop barcode to john.burnett@gmsdk12.org